

SECURIⁿ

The dual-sided card printer to
personalize & laminate secure badges



Color &
Monochrome
Thermal
Transfer



Lamination
Station



300 dpi



Dual-Sided
Printing &
Lamination



100 cards



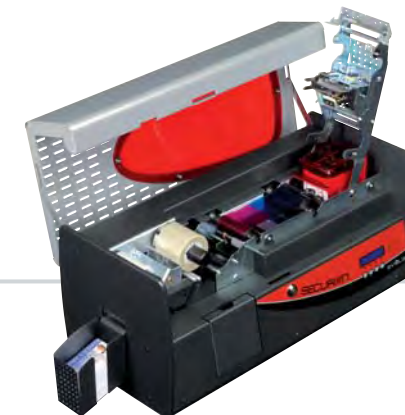
2 years

evolIS

www.evolis.com

SECURIⁿ

A secure way to experience advanced technologies



The Securion is a one-stop solution for personalizing and laminating secure badges on-site. The printer seamlessly scales to meet growing concerns about security and data forgery, while greatly extending the lifespan of any card.

The compact printer offers dual-sided operations on both the color-printing module and the lamination station. A protection film is applied over the surface with hot roller technology, after the graphical and electrical personalization process. The film is either a continuous layer of varnish or a patch. Editing and encoding a secure badge is just a matter of a single pass.

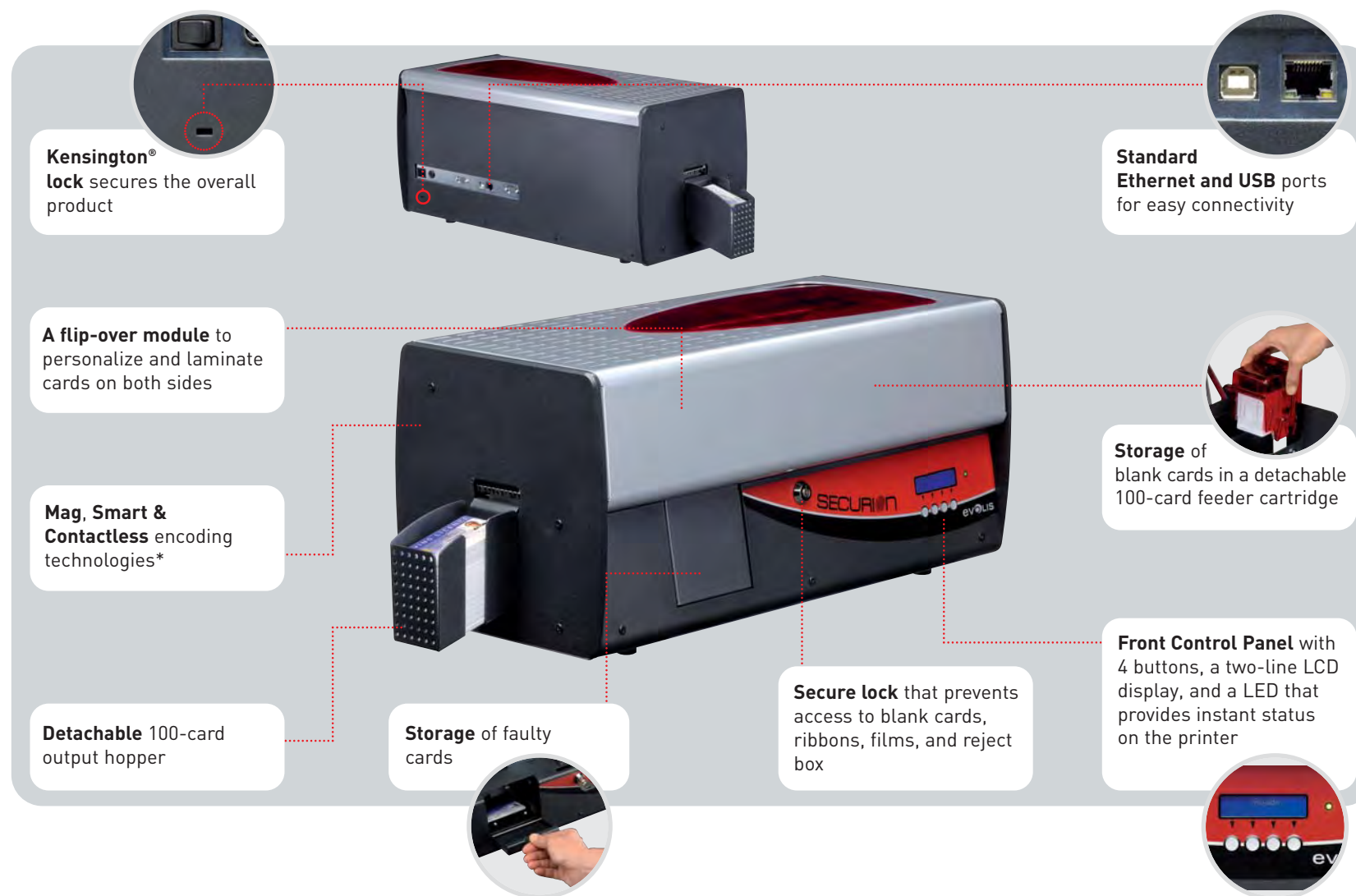
Advanced and flexible encoding options

Securion supports the most advanced encoding options

- ➔ ISO 7811, JIS2 magnetic encoders in HiCo and LoCo.
- ➔ Contact stations with or without encoders for smart cards, ISO 7816-2.
- ➔ Encoders for contactless cards, compliant with the ISO 14443 A and B, Mifare, Desfire, and HID ISO 15693 standards.
- ➔ All options can seamlessly be combined to meet specific requirements.

Technological edge to meet security requirements

- ➔ Securion's color printing engine optimizes **graphical quality** and provides **best-in-class performance**, which makes the Securion the most promising printer in the market.
- ➔ Securion's **foolproof security** results from a Kensington® anti-theft system, password protection, and a centralized locking system to protect consumables (cards and ribbons).
- ➔ Securion's highly sophisticated encoding options can personalize **any card, even the more advanced ones**.
- ➔ Securion's cutting-edge lamination station applies **any type of film**: patch or varnish, holographic or regular, to **guarantee flawless protection of your badges**.



evolis
genuine product

Trust only Evolis Genuine Products

Look for the 'Evolis Genuine Product' logo to benefit from customized high-end consumables.

Printing ribbons

- ➔ Maximize quality of pictures and color textures.
- ➔ Also come in half panel format for best performance-to-price.
- ➔ A valuable asset for printing high-quality badges.

Lamination films

- ➔ Two types of films can be applied: a layer of **varnish or a patch**.
Use patches for protection of badges over three years.
- ➔ Add **holographic elements** to fight and prevent frauds.
Evolis offers hologram personalization to fit all market needs: from single to multiple holographic elements, from simple identification to the highest level of protection.

Extensive range of applications

Securion personalizes and durably protects secured badges in every conceivable security application, from simple ID cards to fraud-proof security:

Governmental applications
Identity cards, Driving licenses, Welfare and health cards



Security and identification applications
at companies, harbors and airports, schools and universities



And for all applications that require **fraud-proof identification and high resilience**



PRINTER SPECIFICATIONS

- Color printing module and laminating unit
- 300 dpi print head (11.8 dots/mm)
- USB & Ethernet TCP-IP connection
- 16 MB RAM allowing two card storages (front & back)
- Flip-over station for dual-sided printing or laminating
- Detachable feeder with a capacity of 100 cards (0.76 mm or 30 mil)
- Output hopper with a capacity of 100 cards (0.76 mm or 30 mil)
- Reject box for 15 cards (0.76 mm or 30 mil)
- Two-line LCD display and a status LED
- Locking system to secure access to blank cards, ribbons, films and rejected cards
- Support for a Kensington® locking system

PRINT MODE

- Color dye sublimation and monochrome thermal transfer
- Enhanced color management system for top quality pictures
- Dual-sided and edge-to-edge printing

LAMINATION MODE

- Full card varnish and patch films
- Dual-sided lamination
- Speed range: 2 mm/s to 18 mm/s (0.08 inch/s to 0.71 inch/s)
- Temperature range: 100°C to 180°C (212°F to 356°F)

PRINT AND LAMINATING SPEED

Personalization throughput will depend on card design and lamination speed settings

- YMCK-K, 1.0 mil patch single-side - 85 to 105 cards/hour
- YMCK, 1.0 mil patch single-side - 95 to 120 cards/hour

SUPPORTED PLATFORMS

- Windows™ XP, 2003 and Vista, 32 & 64 bits

RIBBON TYPES FOR THE PRINTER MODULE

- 2-panel KO black monochrome ribbon - 500 cards/roll
- 5-panel YMCKO color ribbon - 200 cards/roll
- 6-panel YMCKO-K color ribbon - 200 cards/roll
- Half-panel YMCKO color ribbon - 400 cards/roll
- Monochrome ribbons - 1,000 cards/roll: available in black, red, green, blue, white, gold and silver

FILM TYPES FOR THE LAMINATOR MODULE

- Generic thin holographic overlay film, full card surface - 400 cards/roll
- Clear patch 1 mil film - 200 cards/roll
- Clear patch 0.6 mil film - 200 cards/roll
- Special patches and thin overlay films upon request

OPTIONS

- Encoding options (can be combined)
 - Magnetic stripe encoder ISO 7811 or JIS2 - HiCo/LoCo
 - Smart contact station - ISO 7816-2
 - Smart contact station and encoding unit - PC/SC, EMV 2000-1
 - Contactless encoding unit - ISO 14443A, B, ISO 15693, Mifare, DesFire, HID iCLASS
 - Other types upon request
- 100-card additional feeder: Ruby, Lagoon, Glacier

WARRANTY

Use Evolis Genuine products for best performance and extended lifespan of your printer

- Printer, lamination module, print head, and lamination hot roller: a 2-year warranty with a maximum of 100 000 inserted cards, which ever comes first*

* Subject to observance of specific conditions and use of Evolis genuine consumables

Card types

Card format

Card thickness

Card feeder capacity

Card output hopper capacity

Printer size

Printer weight

Connections

Electrical

Environmental

- All PVC, Composite PVC cards
- ISO CR-80 - ISO 7810 (53.98 mm x 85.60 mm – 3.375" x 2.125")
- From 0.25 mm (10 mil) to 1 mm (40 mil)
- No lamination under 0.50 mm (20 mil), recommended from 0.76 mm (30 mil min.)
- 100 cards (0.76 mm - 30 mil)
- 100 cards (0.76 mm - 30 mil)
- Without card hopper: L 562.7 mm x W 262.16 mm x H 274.64 mm (L 22.15" x W 10.32" x H 10.81")
With card hopper: L 658.2 mm x W 262.16 mm x H 274.64 mm (L 25.91" x W 10.32" x H 10.81")
- 15.4 Kg (33.15 Lbs)
- USB and Ethernet ports (USB Cable supplied)
- 110-230 Volts AC, 60-50 Hertz
- Min/Max operating temperature: 15° / 30°C (59° / 86° F)
Humidity: 20% to 65% non-condensing
Min/Max storage temperature: -5° / +70°C (23° / 158° F)
Storage humidity: 20% to 70% non-condensing
Operating ventilation: free air



evolIS

EUROPE, MIDDLE EAST, AFRICA

Evolis Card Printer

29, Avenue de la Fontaine - Z.I. Angers Beaucozuté
49070 Beaucozuté - France
Tel: + 33 (0) 241 367 606 · Fax: + 33 (0) 241 367 612
info@evolis.com

AMERICAS

Evolis Inc.

1835 South Perimeter Road - Suite 190
Fort Lauderdale - FL 33309 - USA
Tel: (954) 491-9898 · Fax: (954) 491-5140
evolisincl@evolis.com

ASIA PACIFIC

Evolis Asia Pte Ltd

Centennial Tower, Level 21 - 3 Temasek Avenue
Singapore 039190
Tel: +65 6549 7606 · Fax: +65 6549 7001
evolisasia@evolis.com